

Security Management System - Managing Infinova 307X NVR channels

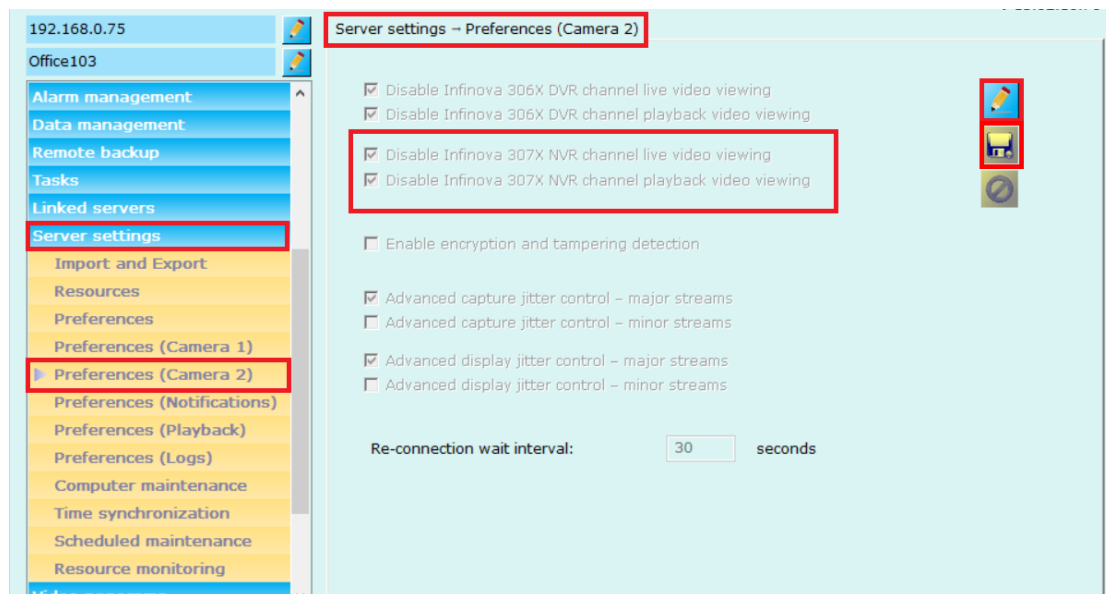
This document describes steps to configure Infinova 307X NVR cameras in Security Management System software.

Note – ‘Microsoft Visual C++ 2015 Redistributable (x86)’ needs to be manually installed on all server computers and all client workstation computers, in the system which includes Infinova 307X NVR channels.

Video display in Security Management System server software

By default, video display for ‘Infinova 307X NVR’ channels is disabled in the Security Management System server software; since most of the server computer hardwares do not have sufficient graphics capabilities.

To enable video display for ‘Infinova 307X NVR’ channels in Security Management System server software, please navigate to ‘Server settings -> Preferences Camera 2’ page from the left hand side navigation menu.



Click on ‘Edit’ button to enable controls.

Un-tick “Disable Infinova 307X NVR channel live video viewing” checkbox

Un-tick “Disable Infinova 307X NVR channel playback video viewing” checkbox.

And click on ‘Save’ button to save the settings.

Notes –

(a) When video viewing is disabled for 'Infinova 307X NVR' channels, the Security Management System server software displayed black video with 'Disabled' message embedded in it.

(b) Just enabling the video viewing for 'Infinova 307X NVR' channels in the Security Management System server software does not ensure video display.

Whether videos from 'Infinova 307X NVR' channels are displayed successfully, depends on the server computer hardware capabilities. If server computer hardware is not compatible, videos for 'Infinova 307X NVR' channels will not be displayed. Either black window or a blank window will be displayed in such cases. It is recommended to switch back to default configuration in such cases, to disable video viewing of 'Infinova 307X NVR' channels.

Adding Infinova 307X NVR channels in Security Management System server software

Please navigate to 'Video devices-> Channels' page from the left hand side navigation menu.

The screenshot displays the 'Video devices - Channels' page in the Security Management System. The left navigation menu is visible, with 'Channels' highlighted. The main area shows a table with columns for Sr No., Channel Name, Camera Status, Channel ID, Description, and Video Stream. Below the table is a 'License information' section with a table showing VMS channels and VA add-on details.

Sr No.	Channel Name	Camera Status	Channel ID	Description	Video Stream

License information:

	VMS channels	VA add-on
Licensed	1024	1024
Used	0	0
Balance	1024	1024

Click on the 'Add video channel...' button to pop-up 'Add video channel' dialog box

Add video channel

Channel Name: Lobby Camera

Channel ID: VC_ Cam055

Channel Description: Lobby Camera

Video Source Type: Infinova NVR 307X

IP address: 192 . 168 . 1 . 182

User Name: admin

Password: •••••

Channel number: 1

Display stream 1
Stream type: H264-Minor stream

Display stream 2
Select stream: Use different stream
Stream type: H264-Major stream

Recording stream
Select stream: Use display stream 1
Stream type: H264-Major stream

Motion detection and video analytics stream
Select stream: Use display stream 1
Stream type: H264-Major stream

Type 'Channel Name' – any string which identifies or shortly describes the camera.
Keep 'Channel ID' unchanged, to use the default
Type 'Channel Description'

Select 'Video Source Type' as 'Infinova NVR 307X' from the available options.

Type 'IP address' of the target 'Infinova 307X NVR'

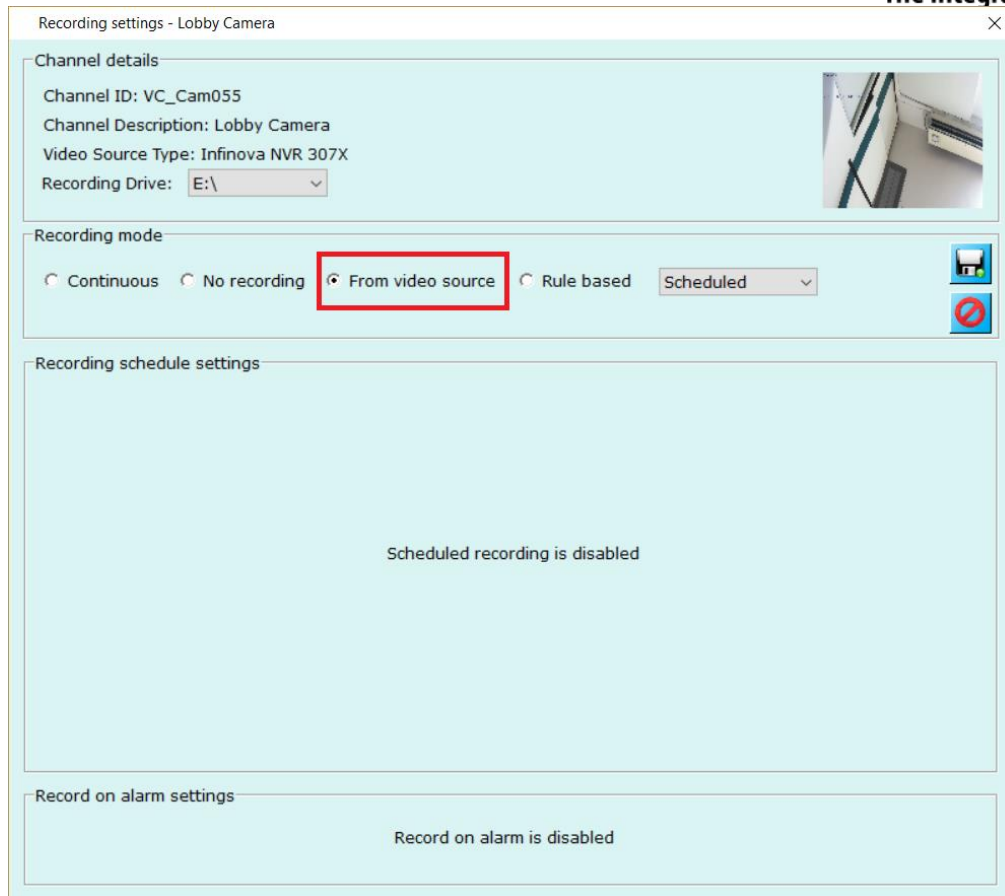
Type 'User name' and 'Password' which will be used to connect to the target NVR

Type 'Channel number' of the target camera

Select "Stream type" for "Display stream 1" and "Display stream 2" from available options.
Select "Recording stream" and "Motion detection and video analytics stream".
It is recommended to use these selections, exactly as per the screenshot above.

Click on the 'Add video channel' button, to finish adding the channel.

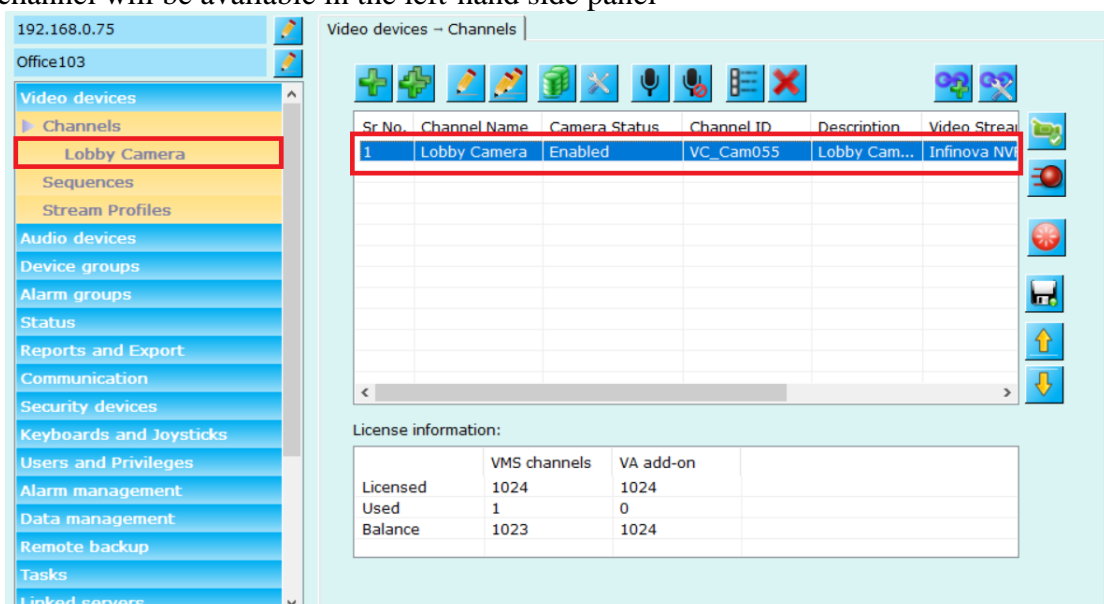
Software will connect to the target NVR channel and upon successfully connecting, it will pop-up recording settings dialog box.



Select 'Recording mode' as 'From video source'. The 'Security Management System' server software will NOT record camera video stream locally, instead it will access video recordings directly from Infinova 307X NVR when needed.

Click on 'Save' button to confirm recording settings update for the newly added channel.

Newly added channel will be visible in the 'Video channels' list page and separate link for this channel will be available in the left-hand side panel



Same steps can be used to add more Infinova 307X NVR channels to Security Management System server software.

Adding multiple Infinova 307X NVR channels

Multiple Infinova 307X NVR channels can be added using 'Add multiple video channels...' button.

Sr No.	Channel Name	Camera Status	Channel ID	Description	Video Stream
1	Lobby Camera	Enabled	VC_Cam055	Lobby Cam...	Infinova NVR

License information:			
	VMS channels	VA add-on	
Licensed	1024	1024	
Used	1	0	
Balance	1023	1024	

Please click on the 'Add multiple video channel...' button. This will popup 'Add Multiple Video Channels' dialog box.

Add Multiple Video Channels

Video Source Type: Infinova NVR 307X

IP address: 192 . 168 . 1 . 182

Channel number: 1

Sr No.	IP address	Channel number

User Name: admin

Password: •••••

Display stream 1
Stream type: H264-Minor stream

Display stream 2
Select stream: Use different stream
Stream type: H264-Major stream

Recording stream
Select stream: Use display stream 1
Stream type: H264-Major stream

Motion detection and video analytics stream
Select stream: Use display stream 1
Stream type: H264-Major stream

Select 'Video Source Type' as 'Infinova 307X NVR' from available options
Type 'User name' and 'Password'.

Click on 'Add cameras from IP range' button. This will popup 'Add cameras in IP range'
dialog box.

Add cameras in IP range

Start IP address: 192 . 168 . 1 . 182

End IP address: 192 . 168 . 1 . 182

Note: All the channels from the devices
with the selected IP address will be added


Type the IP address range.

Here in this example we kept 'Start IP address and 'End IP address' same so that all channels from single Infinova 307X NVR (IP: 192.168.1.182) will get selected

Click on the 'Add' button which will connect to the specified Infinova 307X NVRs, and will connect to the NVRs and add all available channels to the list.

Add Multiple Video Channels

Video Source Type: Infinova NVR 307X

IP address: . . 

Channel number:

Configured channels:

Sr No.	IP address	Channel number	
60	192.168.1.182	60	
61	192.168.1.182	61	
62	192.168.1.182	62	
63	192.168.1.182	63	
64	192.168.1.182	64	

User Name:




Password:

Display stream 1
Stream type:

Display stream 2
Select stream:
Stream type:

Recording stream
Select stream:
Stream type:

Motion detection and video analytics stream
Select stream:
Stream type:

Click on 'Add' button to complete adding all selected channels to the Security Management System server software.

Newly added channels will be visible in the 'Video channels' list page and separate link for each of these channels will be available in the left-hand side panel

192.168.0.75
Office103

Video devices -- Channels

Sr No.	Channel Name	Camera Status	Channel ID	Description	Video Str
54	Cam108	Enabled	VC_Cam108	Cam108	Infinova f
55	Cam109	Enabled	VC_Cam109	Cam109	Infinova f
56	Cam110	Enabled	VC_Cam110	Cam110	Infinova f
57	Cam111	Enabled	VC_Cam111	Cam111	Infinova f
58	Cam112	Enabled	VC_Cam112	Cam112	Infinova f
59	Cam113	Enabled	VC_Cam113	Cam113	Infinova f
60	Cam114	Enabled	VC_Cam114	Cam114	Infinova f
61	Cam115	Enabled	VC_Cam115	Cam115	Infinova f
62	Cam116	Enabled	VC_Cam116	Cam116	Infinova f
63	Cam117	Enabled	VC_Cam117	Cam117	Infinova f
64	Cam118	Enabled	VC_Cam118	Cam118	Infinova f

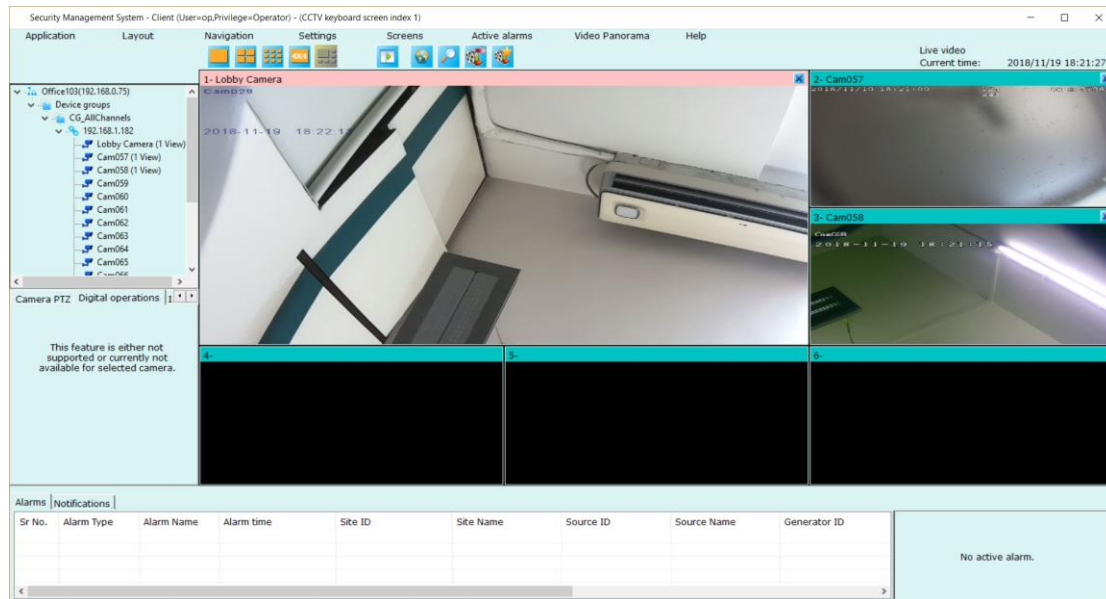
License information:

	VMS channels	VA add-on
Licensed	1024	1024
Used	64	0
Balance	960	1024

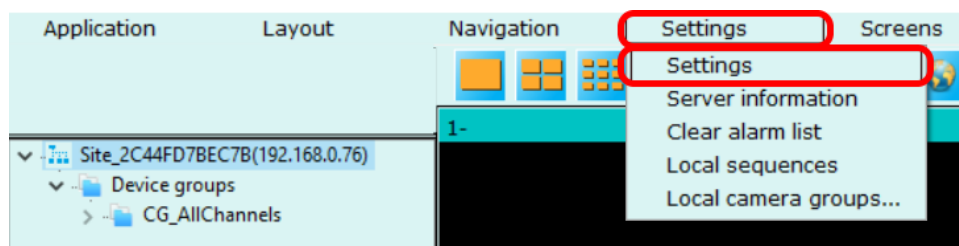
Security Management System client software

Execute 'Security Management System' client software and login to the server using user credentials for any of the 'Operator' privilege user configured in the Security Management System server software

After successful login, main screen will be displayed.



Click on the 'Settings -> Settings...' menu.



This will pop up the 'Settings' dialog box.

Navigate to the 'User interface settings (Client) -> Screen settings' menu.

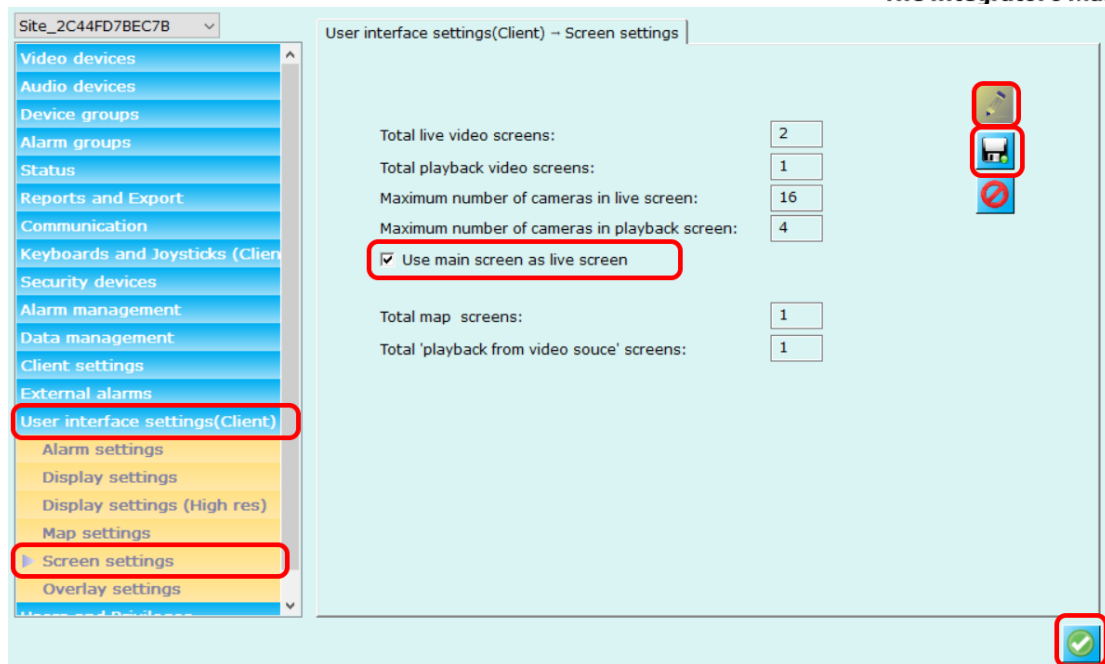
Click on the 'Edit' button which will enable the GUI elements.

Ensure that 'Use main screen as live screen' is ON.

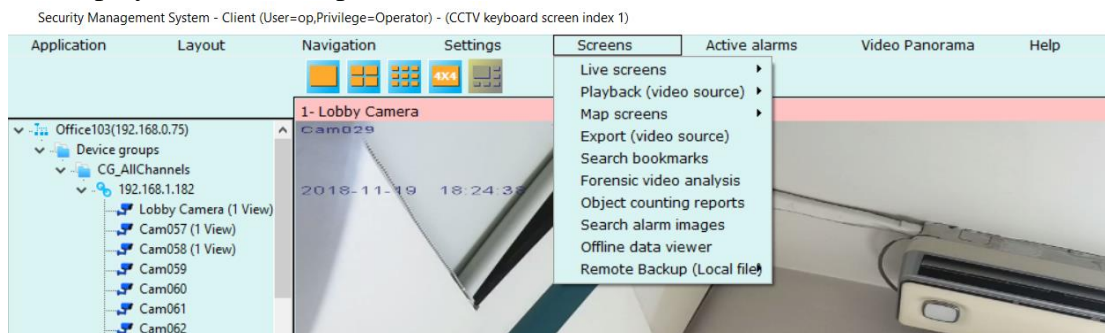
Click on the 'Save' button to save the changes.

Click on the 'Close' button to close the Settings dialog box.

Close the client software and re-start it, to get the latest updated applied.



From the ‘Menu’ bar available at the top, please use the ‘Screens’ menu, for accessing live video, playback video, export video.

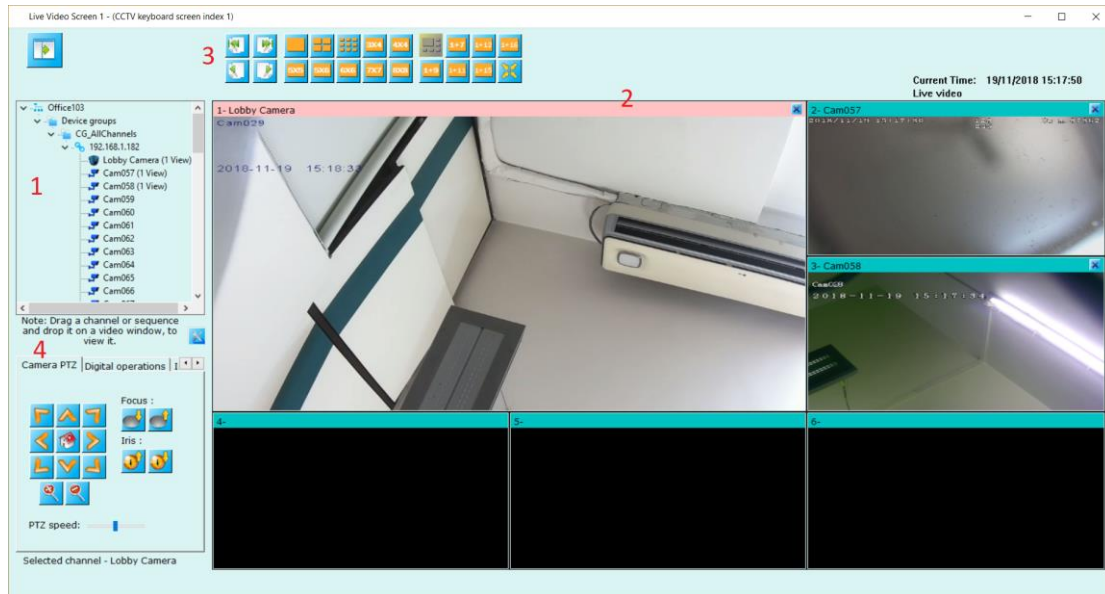


Following is the list of menus available under ‘Screens’, which are relevant to ‘Infinova 307X NVR’ channels -

1. Live screens – popup menu which has sub-menus for opening screens which display live videos. This screen is described in detail in next sections in this document.
2. Playback (video source) - popup menu which has sub-menus for opening screens which display recorded videos and provide playback controls. This screen is described in detail in next sections in this document.
3. Export (video source) – menu which opens ‘Export (video source)’ screen. This screen is described in detail in next sections in this document.

Live video screen

Clicking on 'Screens -> Live screens -> Screen <n>' pops up live video screen.



On left hand side, a tree control (marked with number 1 in above image) listing video channels available in the software.

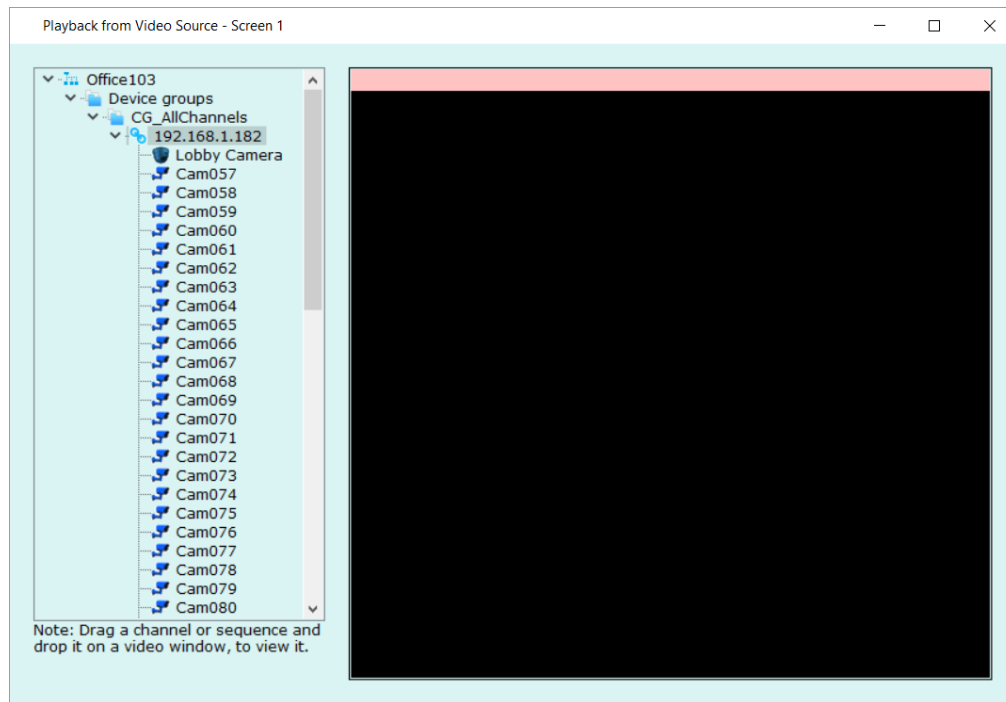
Please click on any video channel from tree and drag it to the 'Video window panel' (marked with number 2 in above image) to see live video for the target video channel.

One video can be selected at a time. The color of the selected video is different than other videos.

Camera control for the camera associated with the selected video, is available on the left bottom corner (marked with number 3 in the above image)

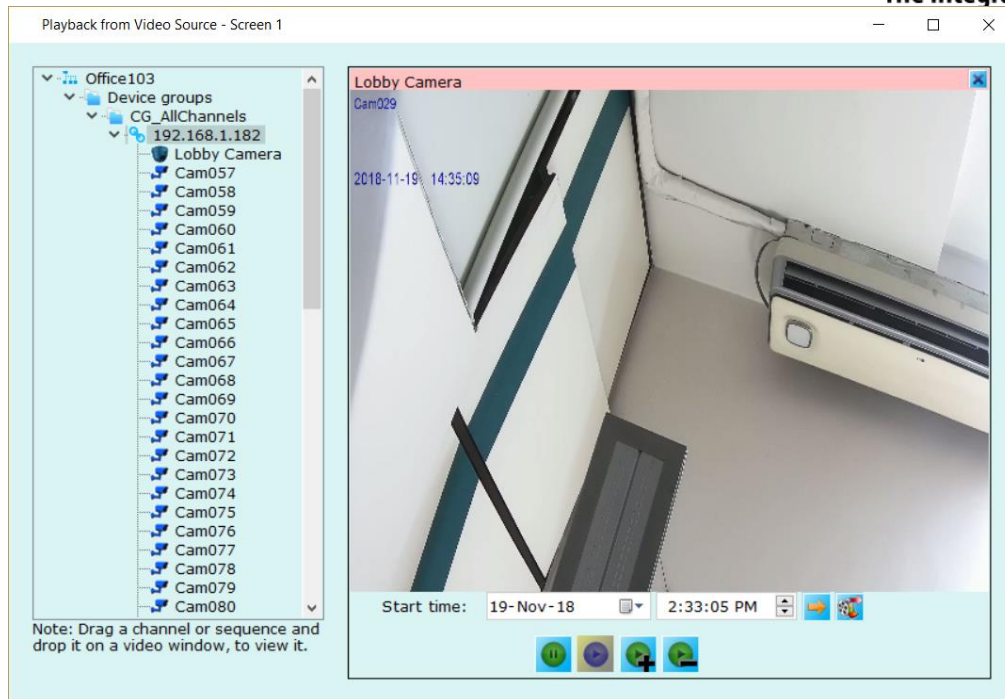
Playback video screen

Clicking on 'Screens -> Playback (video source) -> Screen <n>' pops up playback video screen, for NVR channels



On left hand side, a tree control listing NVR video channels available in the software. Please click on any video channel from tree and drag it to the 'Video window panel' to see recorded video for the target video channel.

When any Infinova 307X NVR channel is selected for playback view, the playback controls are displayed below the video, as per the image below.



Playback speed can be controlled using controls buttons available below the video.

Playback 'Start time' can be set in the user interface and clicking on the 'Go to specified time' starts playback from selected start time.

Export video button, when clicked will open separate 'Export video' dialog box. 'Export video' dialog box features are described in detail in the next section of this document.

Add to Export Queue

Start time: 19-Nov-18 2:30:00 PM

End time: 19-Nov-18 2:40:00 PM

Site name: Office103

Channel list:

Link Name	Channel Name
<input checked="" type="checkbox"/> 192.168.1.182	Lobby Camera
<input checked="" type="checkbox"/> 192.168.1.182	Cam057
<input checked="" type="checkbox"/> 192.168.1.182	Cam058
<input type="checkbox"/> 192.168.1.182	Cam059
<input type="checkbox"/> 192.168.1.182	Cam060
<input type="checkbox"/> 192.168.1.182	Cam061
<input type="checkbox"/> 192.168.1.182	Cam062
<input type="checkbox"/> 192.168.1.182	Cam063
<input type="checkbox"/> 192.168.1.182	Cam064
<input type="checkbox"/> 192.168.1.182	Cam065
<input type="checkbox"/> 192.168.1.182	Cam066
<input type="checkbox"/> 192.168.1.182	Cam067
<input type="checkbox"/> 192.168.1.182	Cam068

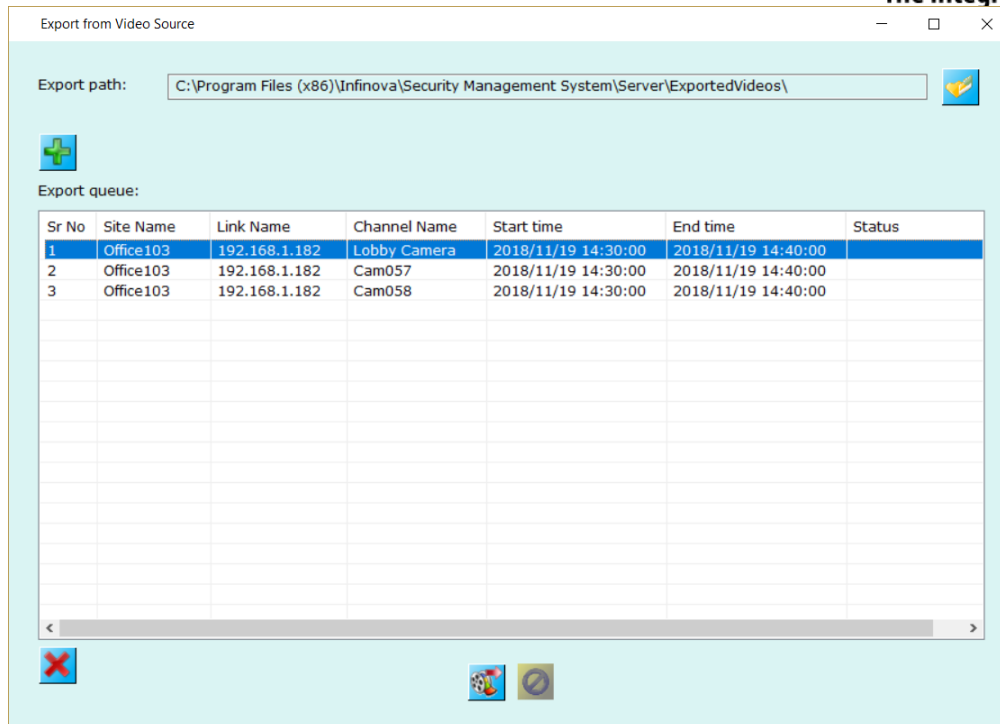
+ -

Please specify the start time and end time for the required video export.

Please select the 'Site name'. This is the 'Site name' associated with the Security Management System server software. For deployments involving only single server, only one option will be available for this.

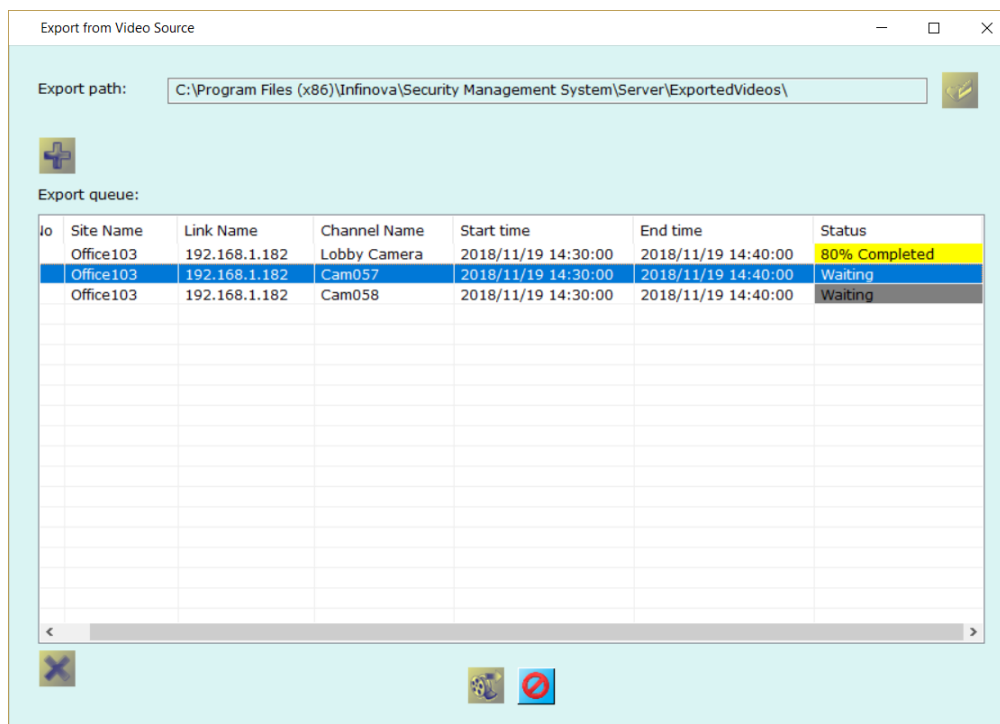
All Infinova 307X NVR channels, available in the selected Security Management System server will be listed. Please select the target channels for the video export.

Click on the 'Add' button to add these selections to the export queue.



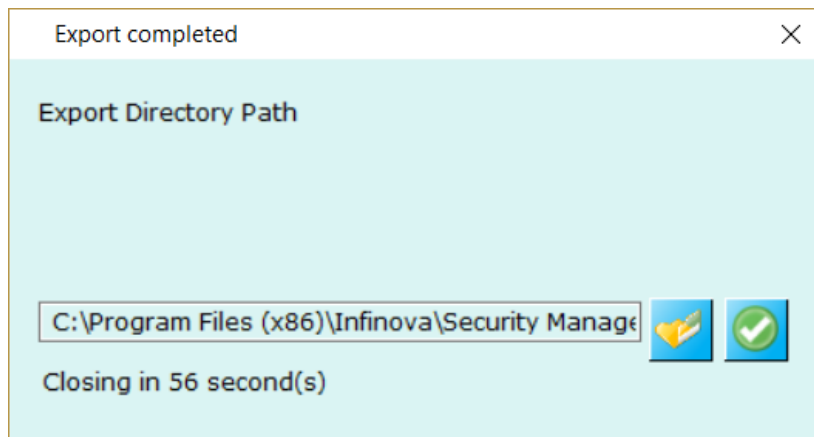
It is possible to add multiple channels with different export duration to the export que, by clicking in 'Add to export queue' button multiple times and selecting required export parameters in each iteration.

After configuring export queue, click on 'Process export queue' button, to start video export.



The export queue will be processed item by item and status will be displayed and updated for each of the item.

Once export queue is processed completely, 'Export completed' dialog box will be displayed.



Click on 'Browse' button to go to the exported video location from standard Windows Explore. A separate sub-folder is available for each item in the export queue.

A player application named 'Infinova307XPlayer.exe' is also copied along with the exported video. The player application can be used to playback the exported files.